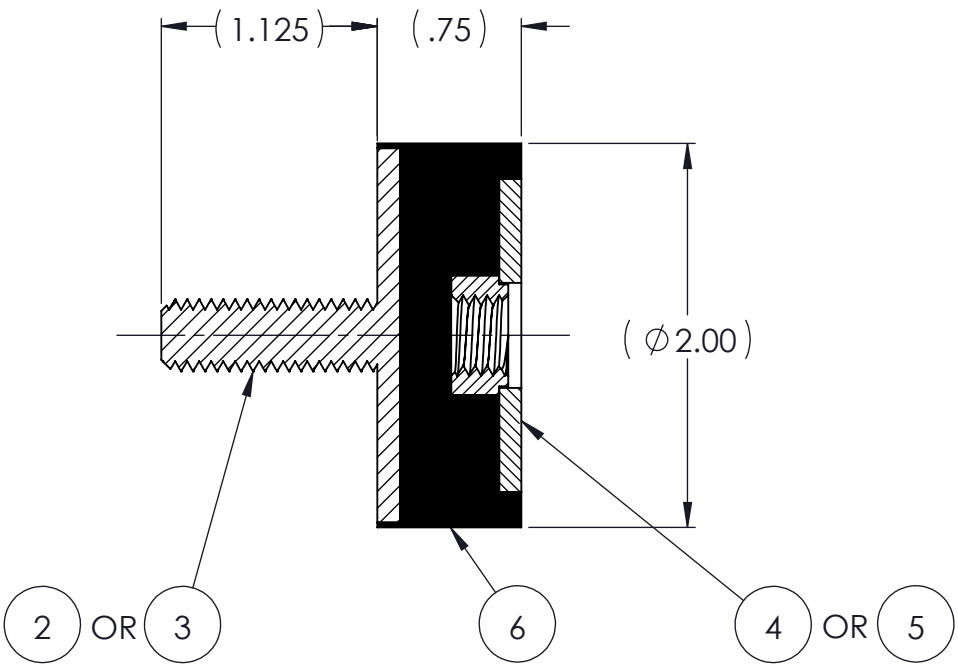
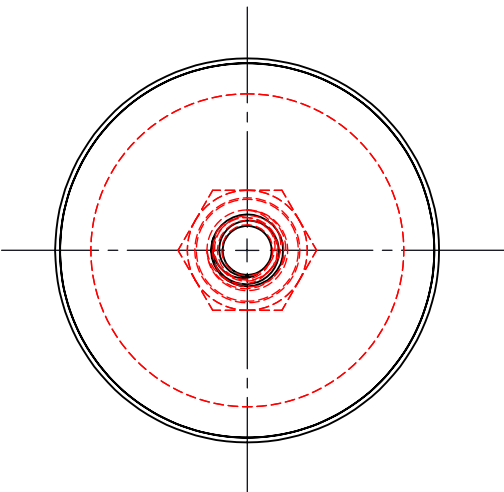
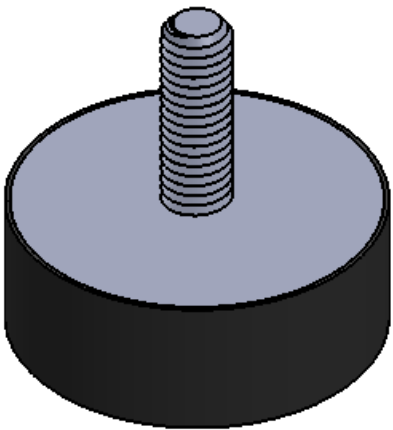


REVISIONS			
REV.	DESCRIPTION	DATE	APPROVED
1	INITIAL RELEASE OF DRAWING	9/30/2014	BS




NOTES:

- 1 MATERIAL: ELASTOMER AND DUROMETER OF 40, 50, 60 OR 70 TO BE SPECIFIED.
- 2 ALL DIMENSIONS ARE REFERENCE.
- 3 AVAILABLE WITH THREADS OF 3/8-16 UNC AND M10 X 1.5.

AR	ELASTOMER	K76-6	1	6
1	MK600-M10	MK600M-M10		5
1	MK600A	MK600A		4
1	MK750-M10	MK750-M10		3
1	MK750	MK750		2
	K76	K76		1
QTY.	DESCRIPTION	PART NUMBER	MATERIAL OR NOTES	ITEM

PROPRIETARY AND CONFIDENTIAL THE INFORMATION CONTAINED IN THIS DRAWING IS THE SOLE PROPERTY OF KARMAN RUBBER. ANY REPRODUCTION IN PART OR AS A WHOLE WITHOUT THE WRITTEN PERMISSION OF KARMAN RUBBER IS PROHIBITED.	SIGNATURE		DATE	UNLESS OTHERWISE SPECIFIED: DIMENSIONS ARE IN INCHES TOLERANCES: .XX = ± 0.031 .XXX = ANGLES = ±1° INTERPRET GEOMETRIC TOLERANCING PER: ASME Y14.5M-1994
	DRAWN	B. SENECAL	09/30/2014	
	CHECK	S. BROWN	09/30/2014	
	ENGR	B. SENECAL	09/30/2014	
	QA			
	STRESS			
	APPR			



**KARMAN RUBBER**  
**VIBRO-INSULATORS®**  
FOR CONTROLLING NOISE, SHOCK & VIBRATION

SIZE	CAGE CODE
<b>B</b>	
DO NOT SCALE DRAWING	

TITLE: K76 SERIES VIBRO-INSULATOR WWW.KARMAN.COM			
DWG. NO. K76		REV 1	
SCALE: 1:1	WEIGHT: 4.0 OZ.	SHEET 1 OF 1	